

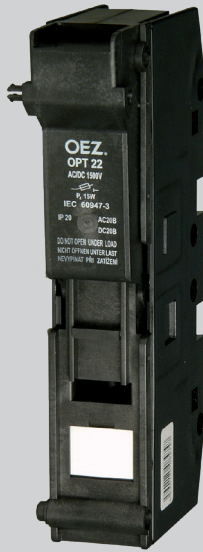
SUMMARY OF MODELS

B

Type	OPVP10	OPVP14	OPVP22	OPT22/OPT20	OPVF10
Rated operating current I_c / Rated current I_n	32 A / –	63 A / –	125 A / –	63 A	– / 30 A
Rated operating voltage U_c / Rated voltage U_n	AC 690 V / – DC 440 V / –	AC 690 V / – DC 440 V / –	AC 690 V / – DC 440 V / –	AC 1 500 V / – DC 1 500 V / –	– – / DC 1 000 V
Fuse-link size	10x38	14x51	22x58	22x127, 20x127	10x38
Utilization category of fuse-link	gG, aM, gR, aR	gG, aM, gR, aR	gG, aM, gR, aR	gR/gS, gR, aR	gR, gPV
Utilization category at AC 400 V	AC-21B	AC-21B	AC-21B	–	–
Utilization category at AC 1 500 V	–	–	–	AC-20B	–
Utilization category at DC 250 V	DC-21B	DC-21B	DC-21B	–	–
Utilization category at DC 1 000 V	–	–	–	DC-20B	–

Accessories					
 <p>Interconnecting busbars</p>	S1L-..., S2L-..., S3...	S3L-...	CS-OPV22-...	–	S1L-...
 <p>Terminal extensions</p>	AS-50-S...		3NP1123-1BD00	–	–
 <p>Adapter for busbar system with spacing 60 mm</p>	8US..		–	–	–
 <p>Remote signalling of fuse-link state</p>		MD-M3		–	–

FUSE DISCONNECTORS OPT



OPT22/1



OPT22-1-S

- Fuse disconnectors are intended for cylindrical fuse-links PT22.
- For the circuit of photovoltaic systems, trolleybuses and trams.
- Hole in the cover for fuse amperage checking.
- Delivered with P-terminal, it can be removed, and the fuse disconnector can be connected by cable lugs and screws M8.
- Mounted on the panel by screws M6.

Fuse disconnectors

I_e [A]	Type	Order code	Number of poles	Weight [kg]	Package [pcs]
63	OPT22/1	OEZ:08474	1	0.48	4
	OPT22/2	OEZ:08344	2	0.96	2
	OPT22/3	OEZ:08700	3	1.44	1
	OPT22/4	OEZ:08345	4	1.92	1
	OPT20	OEZ:34403	1	0.48	1

Fuse disconnectors with local and remote signalling

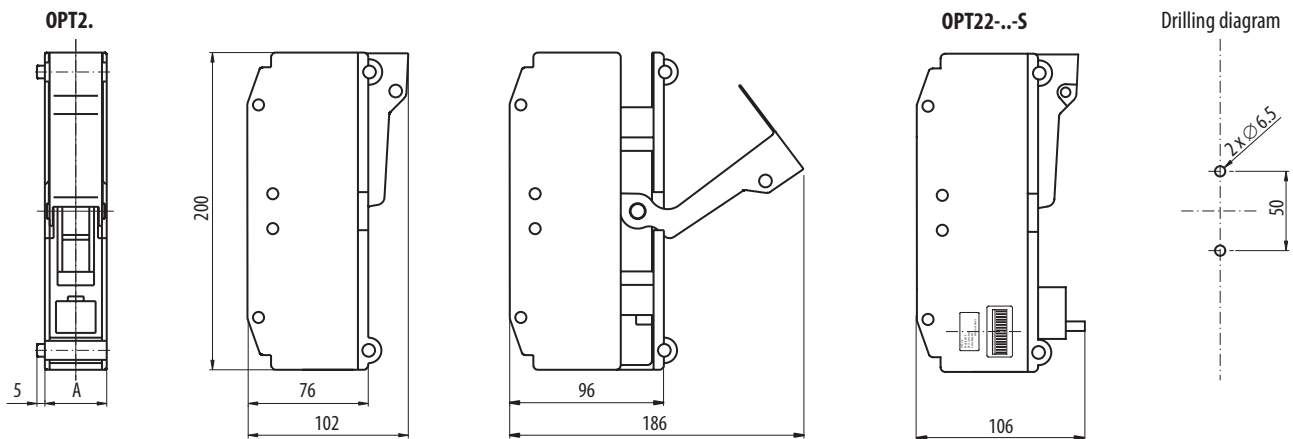
I_e [A]	Type	Order code	Number of poles	Weight [kg]	Package [pcs]
63	OPT22-1-S	OEZ:45695	1	0.52	4
	OPT22-2-S	OEZ:45696	2	1.01	2
	OPT22-3-S	OEZ:45697	3	1.45	1
	OPT22-4-S	OEZ:45698	4	1.99	1

Specifications

Type	OPT22, OPT20	
Standards	IEC 60947-1 IEC 60947-3 EN 60947-1 EN 60947-3	
Approval marks		
Rated operating current	I_e	63 A
Rated operating voltage	U_e	AC/DC 1 500 V
Utilization category	AC-20B DC-20B	
Rated conditional short-circuit current	4 kA	
Rated impulse withstand voltage	U_{imp}	12 kV
Fuse-link size	diameter x length	22x127, 20x127
Max. power losses of the fuse-link	P_v	15 W
Connection		
Connection cross-section	Cu	1 ÷ 50 mm ²
	Al	solid 2.5 ÷ 50 mm ²
Torque	3.5 ÷ 4 Nm	
Local and remote signalling		
LED signalling power supply range	AC 1 000 ÷ 1 500 V / DC 600 ÷ 1 000 V	
External power supply of the signal circuit	DC 24 V	
Max. current of signal circuit	5 A	
Operating conditions		
Mechanical endurance	operating cycles	2 200
Rated duty	uninterrupted	
Degree of protection, cover closed	IP20	
Operating ambient temperature	-25 ÷ +55 °C	
Max. sea level	2 000 m	

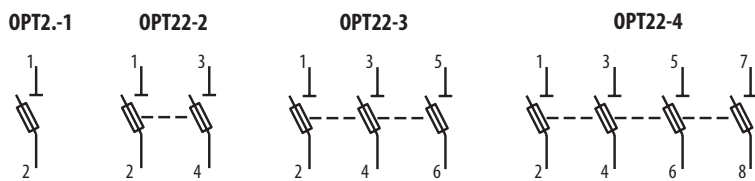
B

Dimensions



Type	A [mm]			
	1-pole	2-pole	3-pole	4-pole
OPT22	40	80	120	160
OPT20	40	-	-	-

Diagram



Remote signalling of fuse state in 1-pole fuse disconnector

State of contacts when fuse-link is not remelted:
contacts 1 – 3 closed

